

PLAN

SECTION B-B

TRAFFIC SIGNAL PULLBOX DETAILS

PRECAST CLASS "B" CONCRETE OR POLYMER CONCRETE

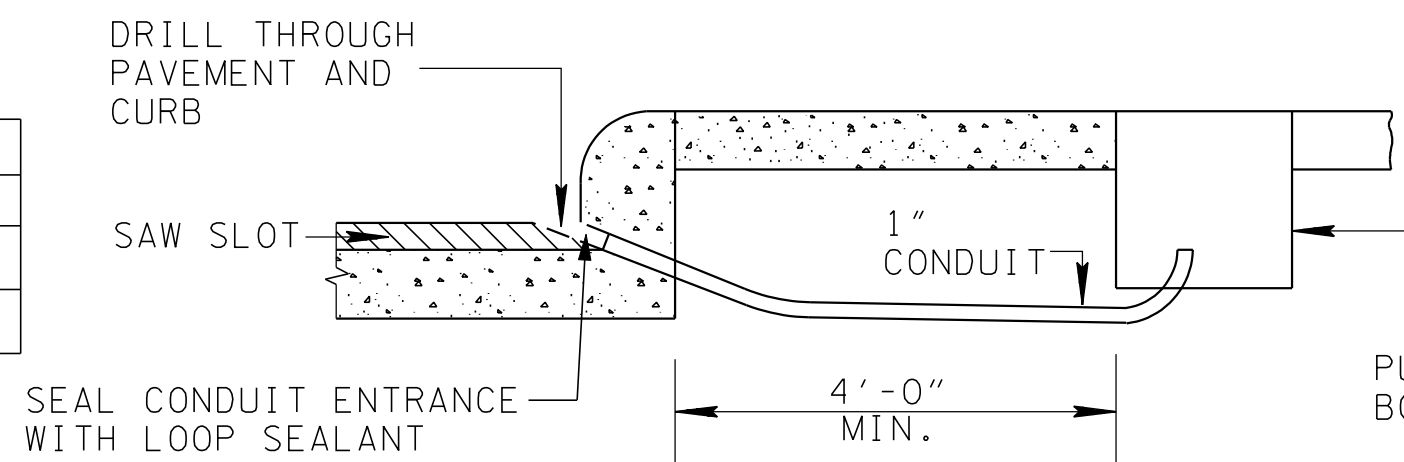
PULLBOX NOTES:

1. GRAVEL, 12" DEEP, IS REQUIRED UNDER PULLBOXES FOR DRAINAGE
2. TRAFFIC SIGNAL, TRAFFIC OR SIGNAL LEGEND REQUIRED.
3. COVERS SHALL BOLT DOWN.
4. PULL BOXES AND COVERS SHALL MEET TIER 15 REQUIREMENTS PER ANSI/SCTE 77 2002 STANDARDS.
5. TYPE A PULL BOXES TO BE USED FOR SPLICING LOOP LEAD IN WIRES TO SHIELDED CABLE ONLY.

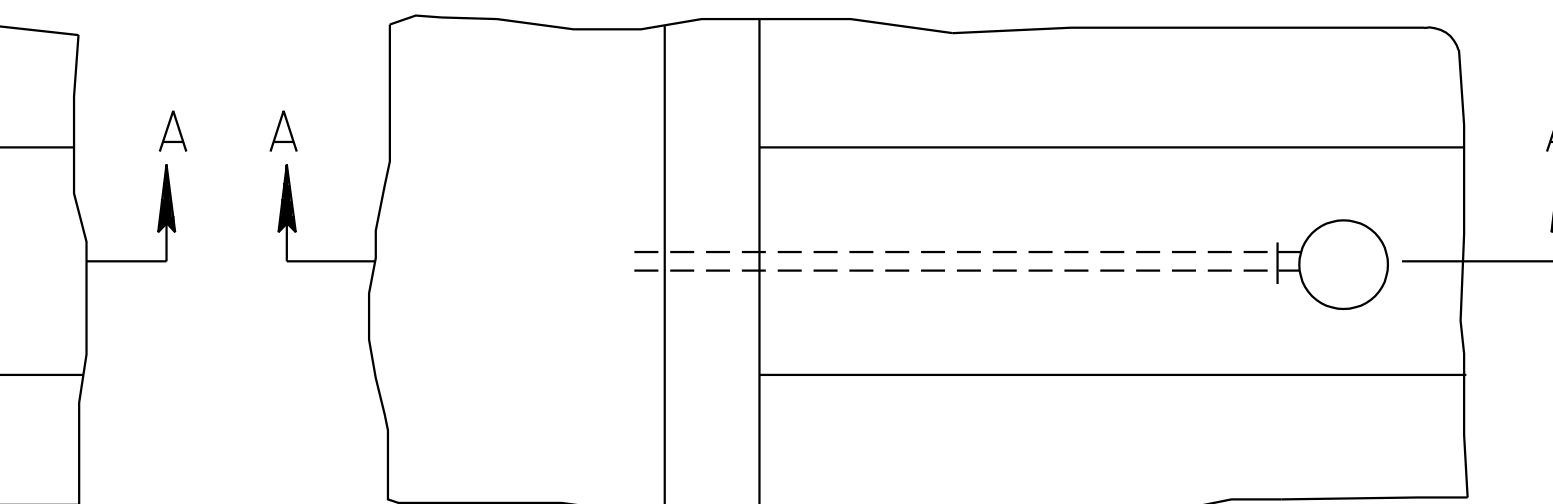
TYPE B PULL BOXES TO BE USED FOR ALL OTHER TRAFFIC SIGNAL APPLICATIONS.

6. RIGID CONDUIT TO BE GROUNDED WITH NO. 6 SOLID BARE COPPER WIRE ATTACHED TO GROUNDING BUSHINGS IN PULL BOX.

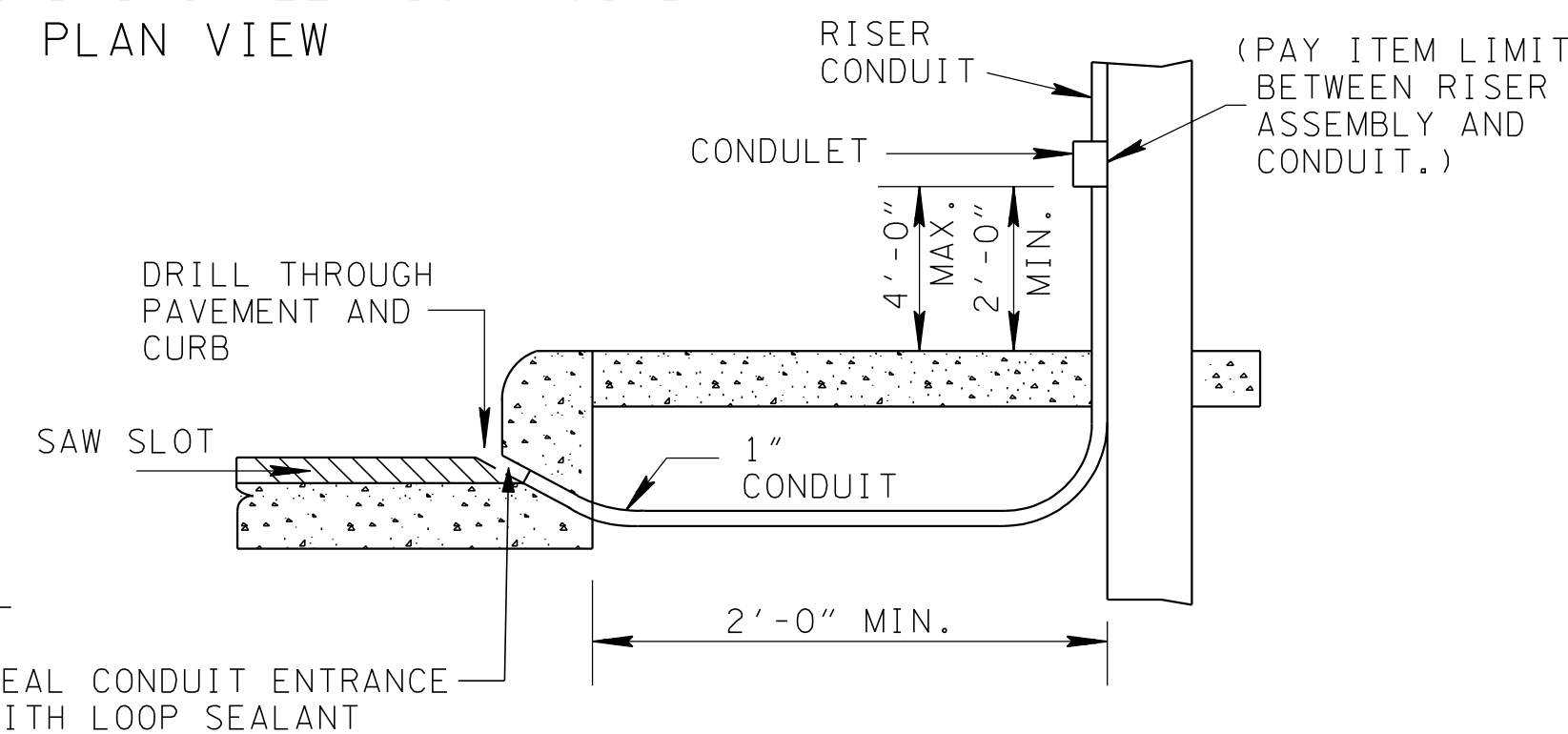
TYPE	MIN. DIMENSIONS		
	LENGTH	WIDTH	DEPTH
A	12"	12"	6"
B	28"	16"	12"



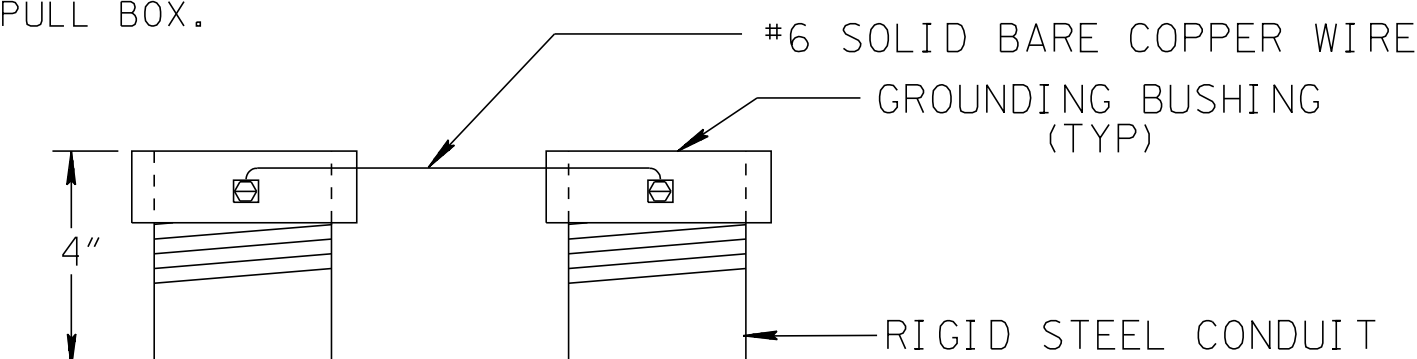
UNDERGROUND INSTALLATION (CURB) SECTION A-A



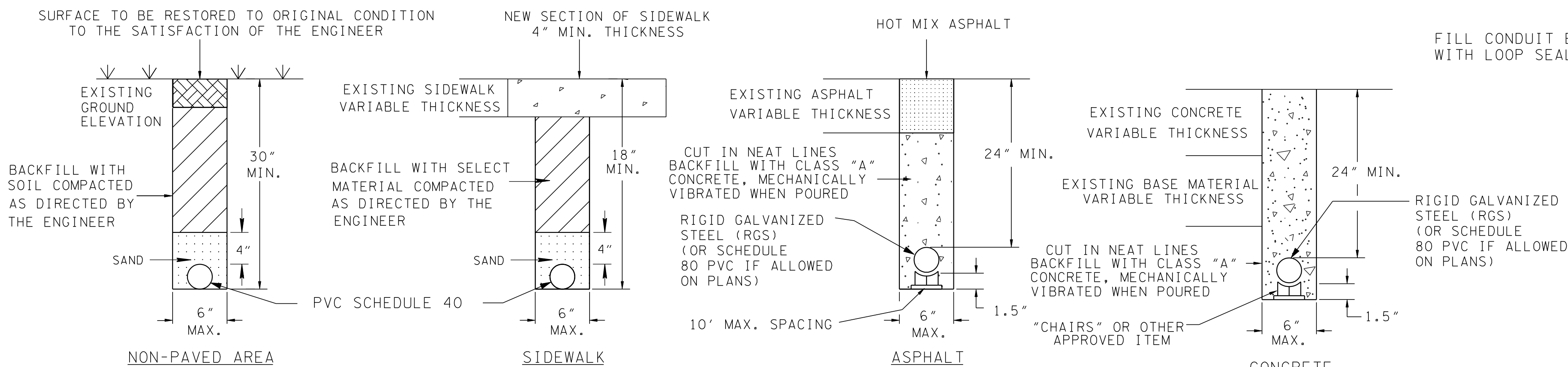
UNDERGROUND INSTALLATION (CURB)
PLAN VIEW



OVERHEAD INSTALLATION (CURB)
SECTION A-A



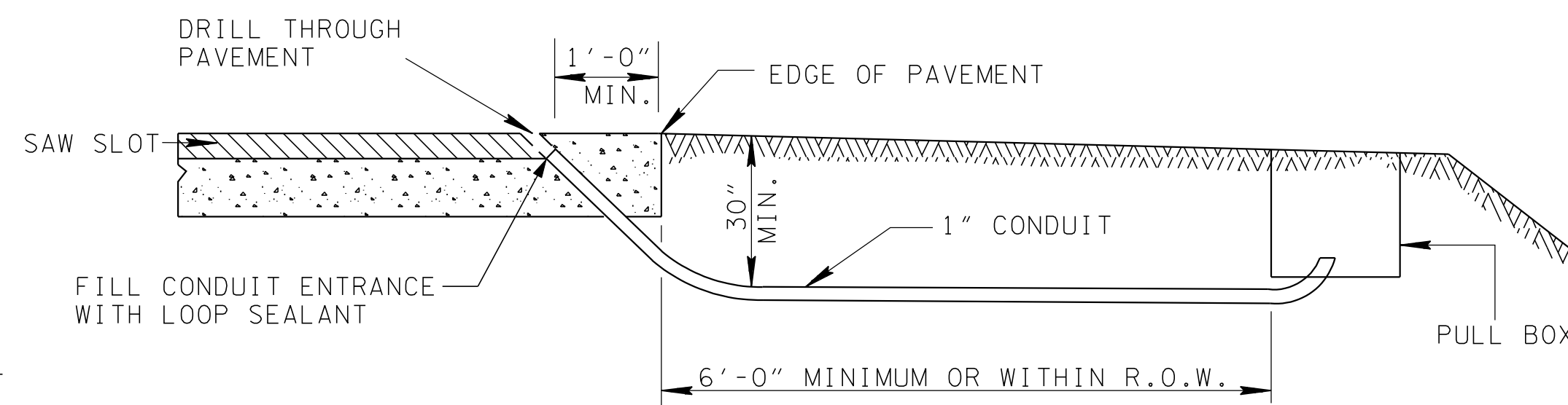
TYPICAL RIGID CONDUIT GROUNDING DETAIL



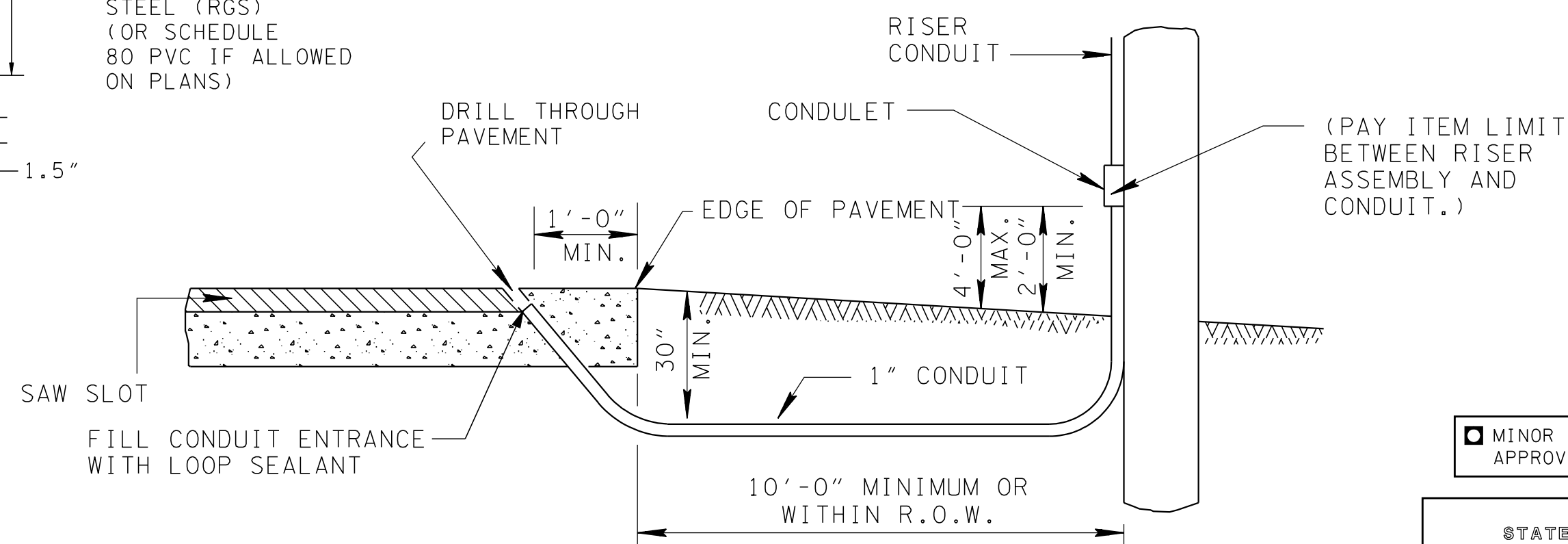
CONDUIT TRENCHING DETAIL

CONDUIT NOTES:

1. CONDUIT TO BE SEALED WITH DUCT SEALER ONCE CABLE IS INSTALLED.
2. SAWCUT SIDEWALK AT EXISTING JOINTS AND REPLACE ENTIRE SECTION TO MATCH EXISTING MATERIAL. WHEN NEW SIDEWALK IS BEING CONSTRUCTED, CONDUIT, PULLBOX, AND POLE ARE TO BE INSTALLED BEFORE SIDEWALK IS POURED.
3. CONDUIT MAY BE TRENCHED OR JACKED. ELECTRICAL SUBCONTRACTOR SHALL COORDINATE CONDUIT INSTALLATION WORK UNDER ROADWAY WITH ROADWAY CONSTRUCTION PHASING IN ORDER TO MINIMIZE JACKING.
4. ALL CONDUIT SHALL USE LARGE SWEEP RADIUS BENDS (MINIMUM RADIUS 6").
5. TYPE 2 WARNING TAPE IS TO BE INSTALLED IN ALL TRENCHES.



UNDERGROUND INSTALLATION (NO CURB)



OVERHEAD INSTALLATION (NO CURB)
TYPICAL INSTALLATIONS FOR LOOP LEAD-INS

REV. 1-25-72: ADDED PAY ITEM
LIMIT BETWEEN RISER ASSEMBLY
AND CONDUIT.

REV. 6-7-72: REMOVED "J"
HOOKS AND WIRE LOOPS FROM
PULL BOX.

REV. 7-1-72: CHANGED
DEPARTMENT NAME.

REV. 1-1-76: CHANGED DRAWING
NO. FROM TR-S-2 TO T-SG-2.

REV. 4-12-85: CORRECTED
DIMENSION ON PULLBOX FRAME
TO 1'-10".

REV. 8-22-91: CORRECTED
WEIGHT OF EXTRA HEAVY COVER
TO 54 LBS.

REV. 4-15-96: REDREW SHEET,
REORGANIZED SHEET AND UPDATED
TO 1996 STANDARDS.

REV. 12-16-03: REVISED PULLBOX
DIMENSIONS, DRAWING AND NOTES,
ADDED CONDUIT DETAILS AND
NOTES, AND REVISED SHEET TITLE.

REV. 7-29-04: CHANGED SHEET
NAME. ADDED TRAFFIC SIGNAL
PULL BOY DETAILS, TRAFFIC RIGID
CONDUIT GROUNDING DETAIL, AND
CONDUIT TRANCHING DETAIL.

MINOR REVISION -- FHWA
APPROVAL NOT REQUIRED.

STATE OF TENNESSEE
DEPARTMENT OF TRANSPORTATION

LOOP LEAD-INS,
CONDUIT AND
PULL BOXES

JAN 1970

T-SG-2